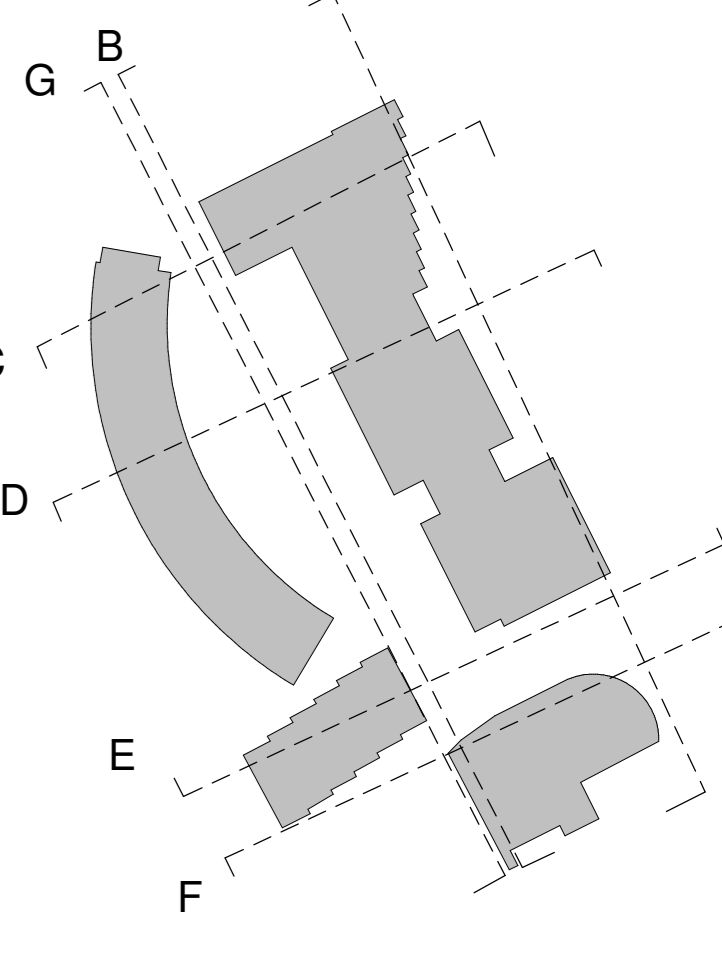


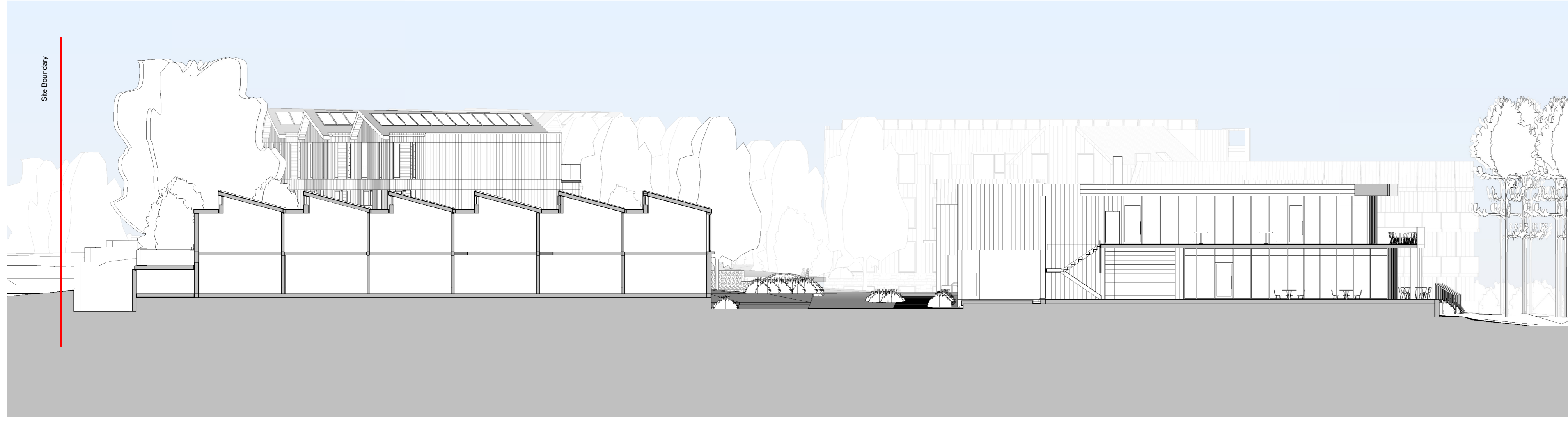
Notes
Do not scale from this document, unless for the purposes of planning applications where a scale bar is provided. Refer to 'General dimensions only'. All dimensions to be verified on site prior to construction. Report all discrepancies in accordance to the Document Originator immediately. This document is to be read in conjunction with relevant documents, drawings and standards.

Key Plan

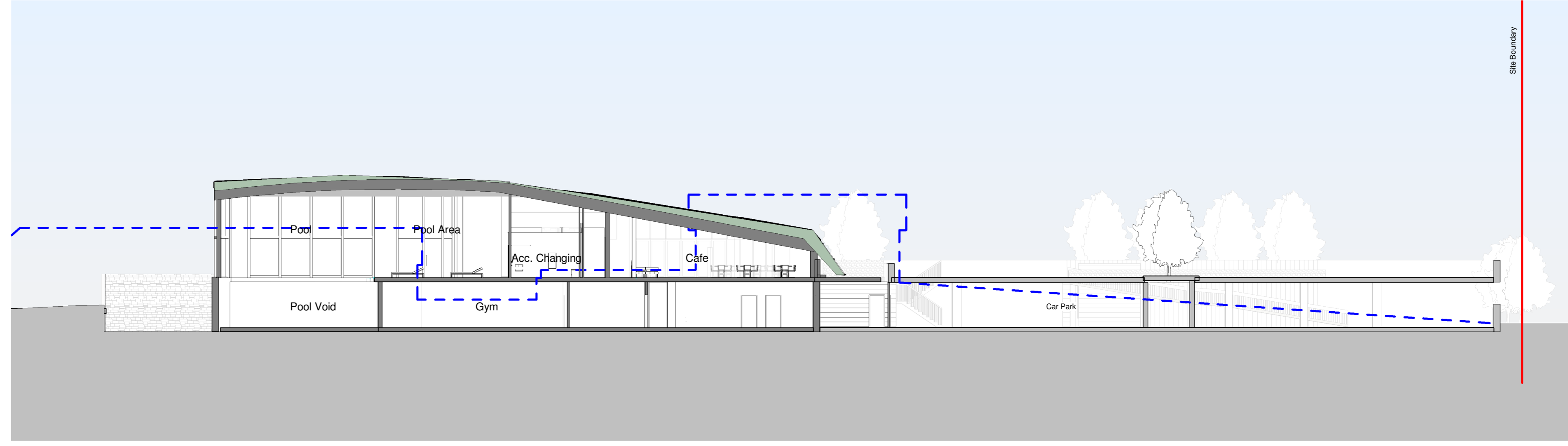


- Key**
- Application boundary
 - - - Existing elevation
 - - - Approximate existing ground level

- Proposed Materials**
- 01 Curtain Wall Glazing - Anodised Bronze Tonal Slit System with Exposed Vertical Mullions & Matching Doors
 - 02 Timber Brise Soleil
 - 03 Timber Cladding - Shingles
 - 04 Timber Cladding - Vertical Alignment Tongue & Groove
 - 05 Vertical Open Slatted Timber
 - 06 Vertical Slatted Timber - Louvre Behind
 - 07 Clear Glazed Frameless Balustrade
 - 08 Stone Wall - Limestone Flubba Walling
 - 09 Standing Seam Natural Grey Zinc Roof
 - 10 Dark Grey Aluminium Doors and Windows
 - 11 Dark Grey Aluminium Louvres
 - 12 Green Wall
 - 13 PV Panels
 - 14 Dark Grey Perforated Aluminium Slat Clutter
 - 15 Timber Soffit
 - 16 Mansard System
 - 17 Entrance Green Roof
 - 18 Entrance Canopy - Pressed Grey Toned Aluminium
 - 19 External Steel Staircase - Dark Grey
 - 20 Dark Grey Render
 - 21 PPC Grey Toned Aluminium Vertical Facing Balustrade
 - 22 Grey stone pavers to balconies



Section EE
1 : 200



Section FF
1 : 200



Section GG
1 : 200

Rev	Date	Notes	Drn	CRK'd
2	0			
0	2			
4	6			
8	10			

SCALE 1:200
m

Document Originator
AWW
London 136 Watton Street, SE1 3QB 020 7140 6000
Plymouth East Quay House, PL4 8AG 01752 261 282
Bristol port + mark, 49-52 Baldwin Street, BS1 1QB 0117 933 2535
RIBA Chartered Practice www.aww-uk.com

Client
Kingfisher Resorts Studland Ltd

AWW Project Number 4561 Project Stage STAGE 2

Project Title
Knot House Studland

The
Extended Site Sections - sheet 2

Issue	Origin	Version	Level	Type	Rev	Number	Rev
4561	AWW	SI	ZZ	DR	A	35001	P02